

International Baccalaureate at Littleton High School



**What is an IB
education?**



IB is about:

creating and sustaining an
intellectual and social community

asking questions and
actively participating in
one's learning

solving complex
problems and
being **creative**

realizing one's
potential and **passions**

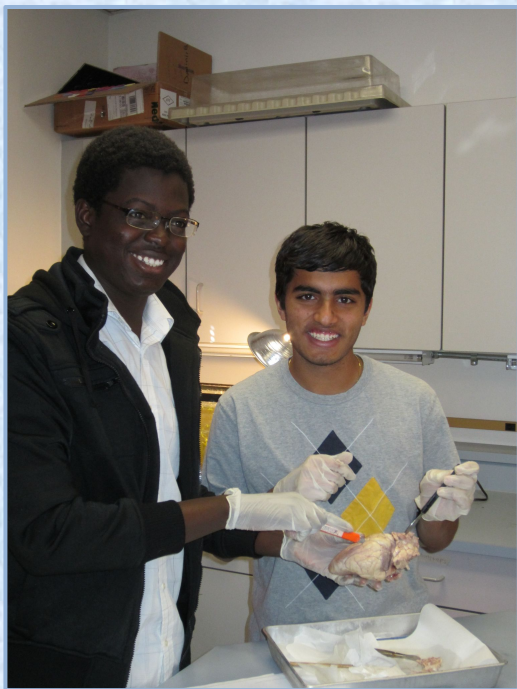
building student
agency

gaining the confidence and skills to
take action in the world



The IB Learner Profile

Inquirers	Open-minded
Knowledgeable	Caring
Thinkers	Risk-takers
Communicators	Balanced
Principled	Reflective



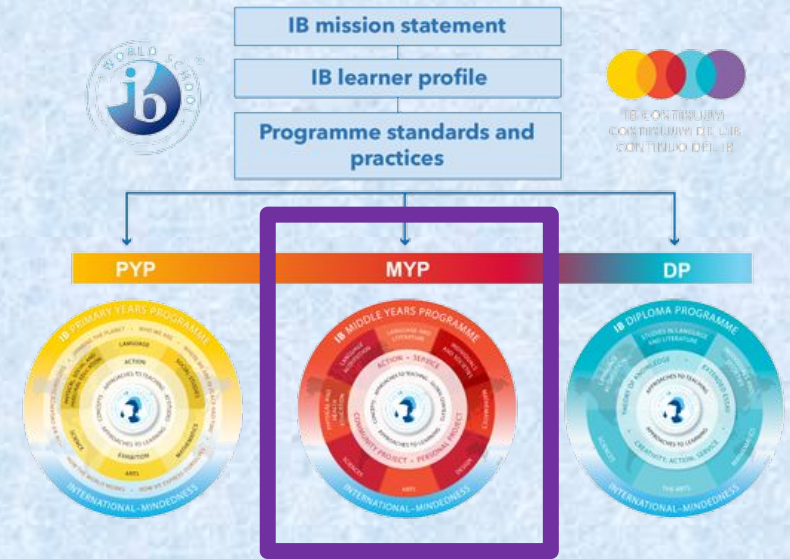
Approaches to learning (ATL) Skills

- Communication**
- Self Management**
- Thinking**
- Research**
- Social**

What is MYP?

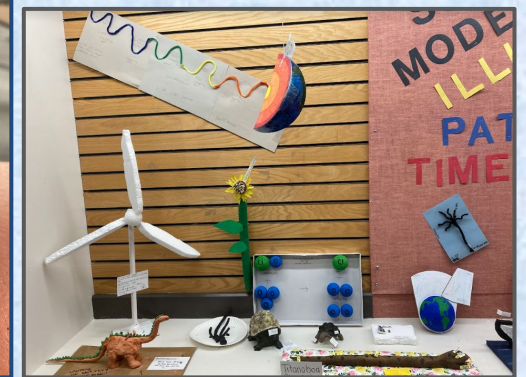
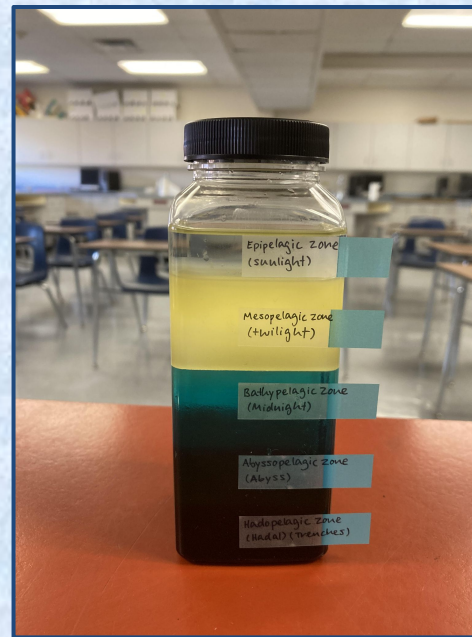
- Middle Years Program (9th and 10th)
- Inquiry-based, concept-driven curriculum, innovative assessments
- Aims to develop active learners and internationally minded students who can empathize with others, are creative, critical and reflective thinkers

The IB continuum of international education



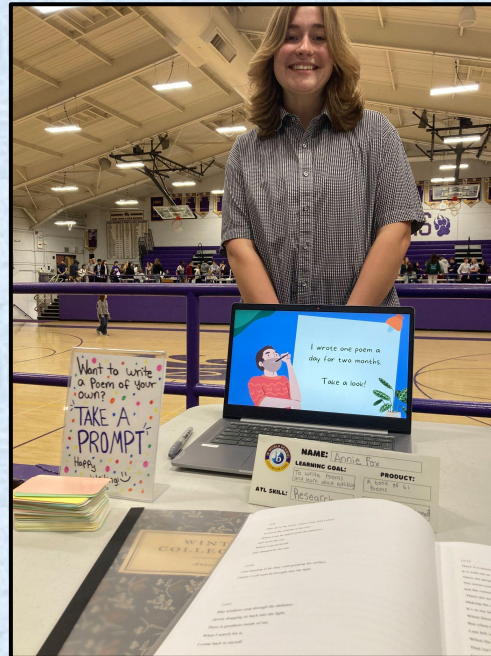
8 Subject Groups

- Language Acquisition
- Language and Literature
- Individuals & Societies
- Sciences
- Mathematics
- Arts
- Physical and Health Education
- Design



Personal Project

- Through the process of **inquiry, action** and **reflection**, students are encouraged to demonstrate and strengthen their approaches to learning (ATL) skills
- Independent and age-appropriate exploration into an area of personal interest
- Promote **motivation, agency**, and capacity for **lifelong learning**



The Six IB Subjects

Group 1 : Language and Literature

Group 2: French or Spanish

Group 3: European and 20th C World History

Group 4: Biology, Chemistry, Environmental Systems and Societies, Sports, Exercise and Health Sciences

Group 5: Three levels of math



Group 6: Electives

Music and **Visual Arts**

Economics

Design Technology

Global Politics

Business Management

Theory of Knowledge (TOK)

Two semesters (spring of junior year, fall of senior year), to explore how knowledge is constructed and answer the question **HOW DO WE KNOW?**

Extended Essay (EE)

An independent research essay on a topic of the student's choice.

CAS hours

50-hour service project, and 33 hours each of **creativity**, **activity** and **service** for 150 total hours over 18 months.

The Acronyms



Why apply in 8th grade?

- We make sure you are in the correct courses in 9th and 10th grades.
- We can provide resources if you need support.
- We can help you decide what path at LHS is right for you.

What if I decide later that I want to do IB?

Current LHS 9th and 10th graders may apply to IB as long as they have:

- fulfilled **IB prerequisites**
- maintained **Cs or better** in their academic courses.



IB Diploma Candidates Class of 2025

Open Enrollment applications (for students who live outside the LHS attendance boundaries)

Oct 1-Nov 15

We process applications on a rolling basis after Nov 15

Find forms on the website (How to Enroll).

Please fill out our IB interest form if you are interested in IB DP.



Academic rigor, positive social interactions, and close relationships with teachers