

Newton Knights

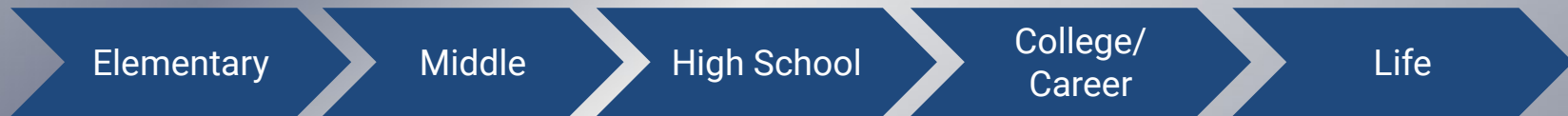


2024

The Middle School Journey

It's a journey between elementary and high school... a time of change for kids- and their families- that includes *discovery*:

- of knowledge
- of themselves
- of the people around them and how they fit in



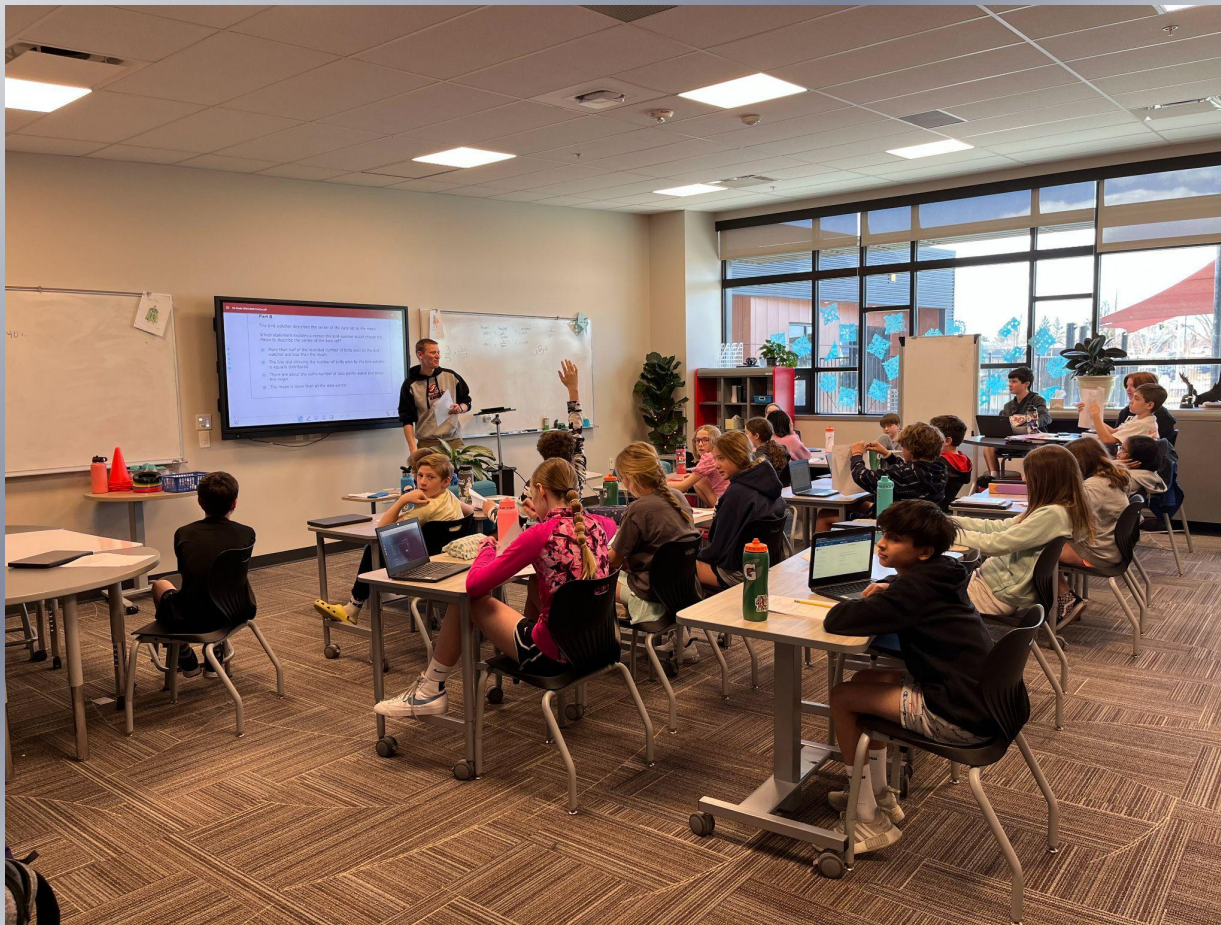
Newton's teachers and administrators
GET middle schoolers and know how
to GUIDE their journey.



Our Mission

At Newton, our mission is to help ALL students grow and succeed by making important *discoveries* about *academics, themselves* and their *community*- inside and outside of Newton.





Math

Math

Math 6



Math 7



Math 8



Math 7/8



Algebra

Math 7



Math 8



Algebra



Math 7/8



Algebra



Geometry

Math 80 minutes every day!





Language Arts

Language Arts



LA 6



LA 7

Accelerated LA 7



LA 8

Accelerated LA 8

**Language Arts 80
minutes every day!**

Language Arts

Everyone will have a summer reading assignment.

ALL students need to read a minimum of TWO books over the summer and fill out the document associated with that assignment. **Information about this assignment will be posted on our website prior to the end of the school year.





Science

Science

Nature of Science

- Lab Procedures
- Scientific Method

Classification (5 Kingdoms)

Ecology (how life on earth interacts)

Renewable and Non-renewable sources

Constructive and Destructive forces on Earth (focusing on rock cycle)

Chemistry

- Solid/liquid/gas
- Density
- Parts of an atom





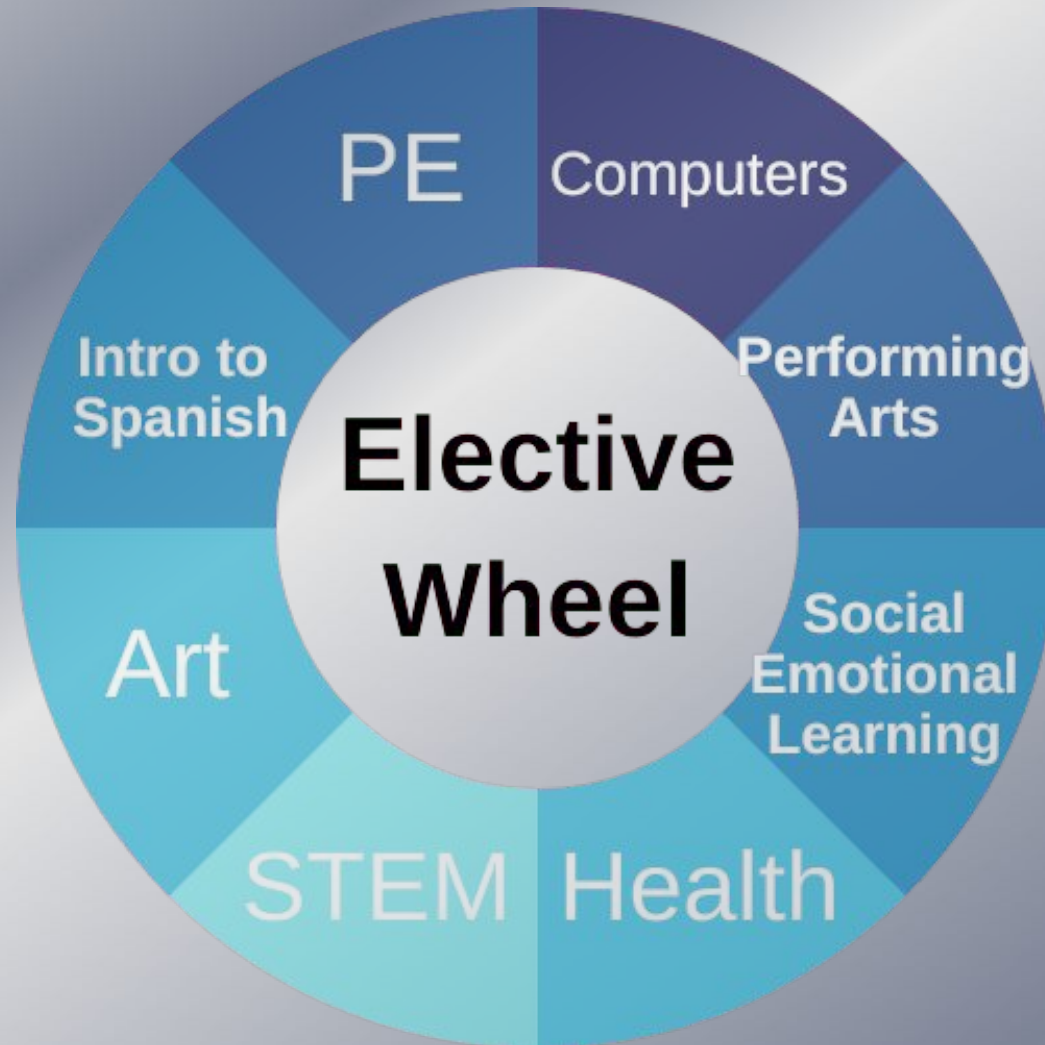
Social Studies

Social Studies

- Western Hemisphere
- Native American Civilizations
- Personal Finance Literacy



ELECTIVE WHEEL





Physical Education & Health

Physical Education

- **Physical Education will be part of the elective rotation**
- **Physical Fitness and Health are Lifetime Goals**
 - Track and Field**
 - **Archery**
 - **The Upper Limit (Climbing Wall)**
 - **Volleyball**
 - **Basketball**
 - **Flag Football**
 - **Fitness Lab**
 - **Health (Nutrition, Heart Rates, 5 Components of Physical Fitness)**





STEM

STEM

- **STEM**
(Science—Technology—Engineering—Math)
- **21st Century Skills & Technology Literacy**
 - **Critical Thinking & Reasoning**
 - **Collaboration**
 - **Invention**
 - **Self Direction**
 - **Information Literacy**
 - **Problem Solving**

**6 Areas of STEM: Transportation,
Construction, Manufacturing,
Communication, Alternative Energy, Bio
Technology**





Art

Visual Arts

Intro to 2 & 3 Dimensional Art

Theory

- Planning
 - Process
 - Evaluation
 - Understanding the elements of art & design
 - How to view, understand, & interpret a piece of artwork
 - Introduction to the process of critique
 - Use of various media and projects to practice and enhance fine motor skills
- Collographs, weaving, painting techniques, clay





Performing Arts

Performing Arts

Learning How to Sing

- Using your voice
- Following a piece of music
- Singing in 2 & 3 part harmony
- Fundamental of music theory
- Performance preparation,
- audience awareness & concert etiquette

Basic Acting Skills

- Using your voice, face, and body
- Portraying a character
- Improvisation, pantomime & storytelling
- Dramatic interpretation





MUSEO DEL PRADO

PUERTA DE LOS LEONARDO

Intro to Spanish Culture

Introduction to Spanish Cultures

Focus 1—Culture

- Geography of the Spanish speaking world & its impact on our language and culture
- Importance of learning other languages in today's world
- Exploring cultural diversity and its importance

Focus 2—The Language

- **Basic Vocabulary & Grammar:**
 - Dates, Weather, Seasons, Colors, Numbers, Alphabet, Pronunciation
 - Basic expressions of likes, dislikes, school and family related phrases





Computers

Computers

Focus on Computer Literacy & tools to innovate

Module #1 Communication Tools

- Computer Literacy
- Keyboarding

Module #2 Digital Citizenship

- Digital Footprint & safety
- Social Media awareness

Module #3 Exploring Computer Science

- Creating and coding
- Computational Thinking
- Media/Video
- Design Thinking





Instrumental Music

Instrumental Music

- Read & Write Music
- Play a brass, woodwind, string or percussion instrument
- Use music technology
- Perform music from various time periods and genres
- Performance opportunities
 - Large group—band, orchestra
 - Solos and small ensembles



Instrumental Music

- *Please check Mrs. Bransgrove's teacher page on Newton's website for instrument selection. Go to the "Instrumental Music FAQ's" link and please complete the "Music Intent Form" provided with your registration materials. The form is also available from Newton's website.*





Everyday Living



Mental Health Team



Mental Health Team

School Psychologists (IEP)

Wynne Bosik- Mental Health Minutes

Rosa Pae- Mental Health Minutes

School Social Workers (General Education)

Megan Rotter (A-K)

Jordan Verdie (L-Z)



Mental Health Team

- ❑ Individual Social Emotional support
- ❑ Social Skills groups
- ❑ Community Resources/Outside Counseling Resources
- ❑ Executive Functioning skills/groups
- ❑ Lunch Groups
- ❑ Assistance with self-advocacy and communicating with other staff
- ❑ Assist with peer concerns

Mental Health Team

STAFF PAGES KNIGHTLY NEWS SCHOOLS

Students > Staff Pages

STAFF PAGES

Adolph, Virginia, Math	vadolph@lps.k12.co.us
Andrews, Jesse, Art	jandrews@lps.k12.co.us
Andrews, Tom STEM	tandrews@lps.k12.co.us
Atherton, Rob Language Arts	ratherton@lps.k12.co.us
Bartoszek, Brooke Social Studies	bbartoszek@lps.k12.co.us
Benson, Katie, Special Education	kabenson@lps.k12.co.us
Bloom, Katie Language Arts	kbond@lps.k12.co.us
Bosik, Wynne, Psychologist	wbosik@lps.k12.co.us
Bransgrove, Julia, Band/Orchestra	jbransgrove@lps.k12.co.us
Braun, Scott Social Studies	sbraun@lps.k12.co.us

Administrators

O'Tremba, James Principal

Gambrell, Catie Assistant Principal

Wyckhuyse, Brian Assistant Principal

Additional Support

Mental Health and Counseling

Peterson, [Name] Head Custodian

Cruz, Stacie [Title] Manager

Pourarfaie, Mitra Attendance Clerk

Schultz, Jessica Bookkeeper





Schedules

Block Scheduling

Newton Middle School 2023-2024 Bell Schedule

<u>Monday</u> Odd	<u>Tuesday</u> Even	<u>Wednesday</u> Odd/Even Rotation See Odd/Even Calendar	<u>Thursday</u> Odd	<u>Friday</u> Even
1 (8:20-9:46)	2 (8:20-9:46)	1 or 2 (9:20-10:30)	1 (8:20-9:46)	2 (8:20-9:46)
3 (9:50-11:15)	4 (9:50-11:15)	3 or 4 (10:34-11:44)	3 (9:50-11:15)	4 (9:50-11:15)
<u>8th grade:</u> Lunch (11:15-11:50) 5 (11:54-1:19)	<u>8th grade:</u> Lunch (11:15-11:50) 6 (11:54-1:19)	<u>8th grade:</u> Lunch (11:44-12:19) 5 or 6 (12:23-1:42)	<u>8th grade:</u> Lunch (11:15-11:50) 5 (11:54-1:19)	<u>8th grade:</u> Lunch (11:15-11:50) 6 (11:54-1:19)
<u>7th Grade:</u> 5 (11:19-12:00) Lunch (12:00-12:35) 5 (12:39 - 1:19)	<u>7th Grade:</u> 6 (11:19-12:00) Lunch (12:00-12:35) 6 (12:39 - 1:19)	<u>7th Grade:</u> 5 or 6 (11:48-12:25) Lunch (12:25-1:00) 5 or 6 (1:04-1:42)	<u>7th Grade:</u> 5 (11:19-12:00) Lunch (12:00-12:35) 5 (12:39 - 1:19)	<u>7th Grade:</u> 6 (11:19-12:00) Lunch (12:00-12:35) 6 (12:39 - 1:19)
<u>6th Grade:</u> 5 (11:19-12:44) Lunch (12:44-1:19)	<u>6th Grade:</u> 6 (11:19-12:44) Lunch (12:44-1:19)	<u>6th Grade:</u> 5 or 6 (11:48-1:07) Lunch (1:07-1:42)	<u>6th Grade:</u> 5 (11:19-12:44) Lunch (12:44-1:19)	<u>6th Grade:</u> 6 (11:19-12:44) Lunch (12:44-1:19)
7 (1:23-2:48)	8 (1:23-2:48)	7 or 8 (1:46-2:56)	7 (1:23-2:48)	8 (1:23-2:48)
SH/Intervention (2:52-3:30)	SH/Intervention (2:52-3:30)	Homeroom (3:00-3:30)	SH/Intervention (2:52-3:30)	SH/Intervention (2:52-3:30)

Example Weekly Schedule

<u>Monday</u> (Odd)	<u>Tuesday</u> (Even)	<u>Wednesday</u> Rotating	<u>Thursday</u> (Odd)	<u>Friday</u> (Even)
1 – Spanish	2 – Band	1 Spanish or 2 – Band	1 – Spanish	2 – Band
3 – Lang Arts	4 – Lang Arts	3/4 – Lang Arts	3 – Lang Arts	4 – Lang Arts
5 – Science	6 – Social Studies	5 – Science OR 6 – Social Studies	5 – Science	6 – Social Studies
7 – Math	8 – Math	7/8 – Math	7 – Math	8 – Math
Reading Block	Reading Block	Homeroom	Reading Block	Knight Time



Knighth Time

Enrichment & Intervention

"Knight Time"

- **Intervention** (Mondays, Tuesdays, Thursdays) targeted to specific student need. Timely and focused. OR Reading Blocks
- Flexible schedule that changes quickly to allow for teachers to quickly respond to student needs!
- **Enrichment** (Fridays) based on student suggested topics ranging from Create a Comic Book and Debate to Yoga and Archery.

Knights Time

- Space Exploration
- Lip Sync Battle
- Artistic Expression
- Gardening
- Rube Goldberg Machines
- Ultimate Frisbee
- Team Sports
- Battle of the Books
- Friendship Bracelets
- Yoga
- Lego Building
- Zentangle
- Minecraft Challenge
- History Of Film
- Archery

Before & After School at Newton

Sports:

Fall- Track

Winter- Basketball,
wrestling

Spring- Girls'
volleyball

Clubs & Other

Activities:

Musical

Art

WEB

NJHS

Jazz Band

If you want to create your
own- go for it!



WELCOME TO NEWTON'S PTO

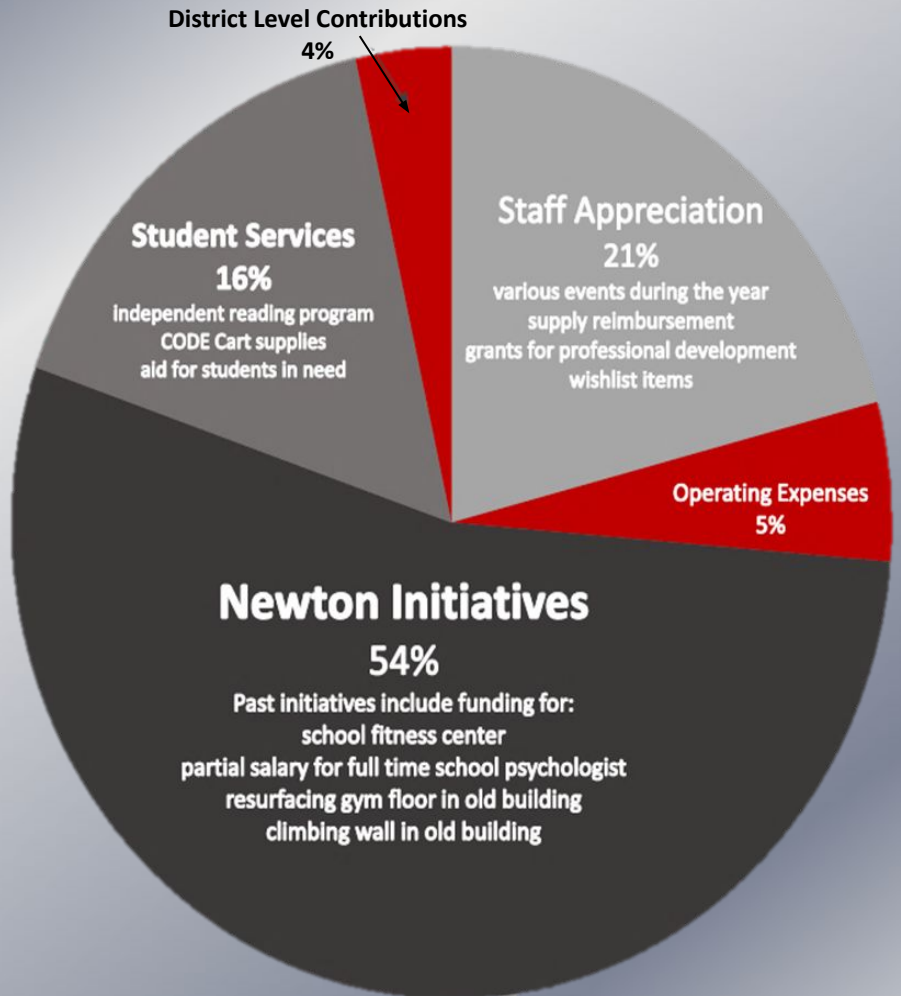
What Does PTO Do?

- Newton Initiatives
- Staff Appreciation
- Student Services

...& more

How Does it Get Done?

- Donations & Volunteers



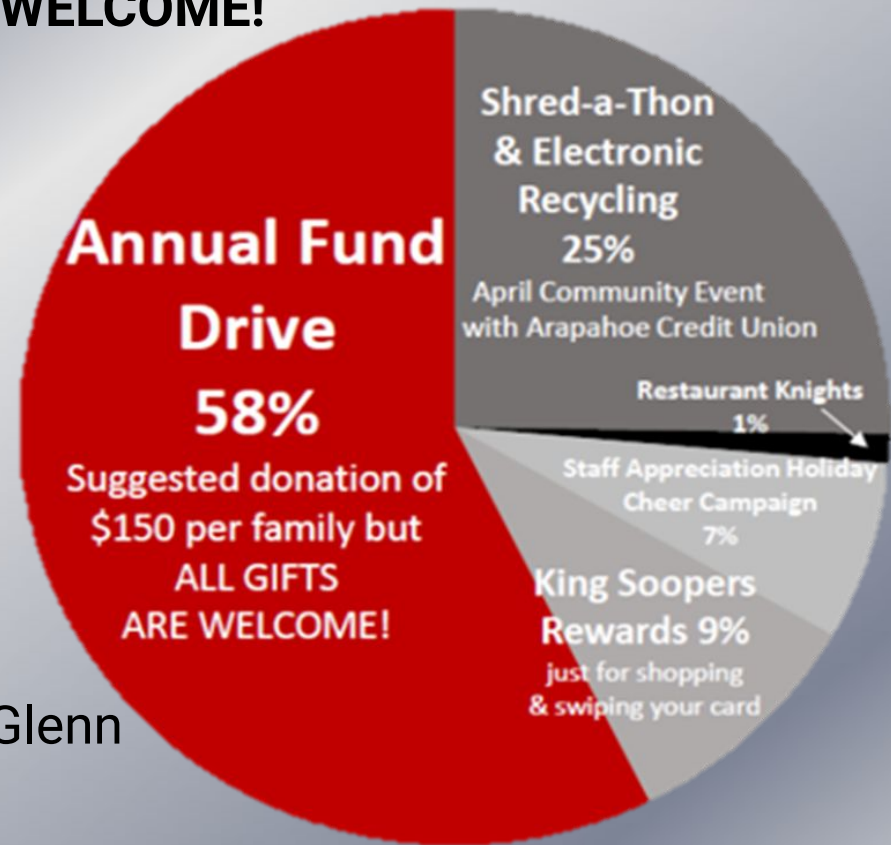
WHERE DO OUR DONATIONS COME

FROM?

- Annual Fund Drive (1 fundraiser)
\$150 suggested – **ALL GIFTS ARE WELCOME!**
 - Infinite Campus
(online with school fees)
 - PayPal (monthly)
- Holiday Cheer Campaign
- Shred-a-Thon
- Passive Fundraising-



No Extra Cost to You
Restaurant Knights
StreetSmarts at SouthGlenn
King Soopers Rewards



AVAILABLE VOLUNTEER POSITIONS

Nomination Required

President

VP

Treasurer

Secretary

At-Large Members

Committee Chair

General Member

For more information
visit NMS PTO on the
Newton Website
or email

NewtonPTOPres@gmail.com



Important Dates

April 18	Instrument Screening Night <i>5:30-7:00 pm</i> <i>Band Room</i>
April 23, 25, & May 1:	Math Placement Tests <i>Virtual, 4:00-5:00</i>
May 6:	Website Registration Information available
July 8:	Fee Payment opens <i>Online with credit card</i>
August 12:	Schedules available on IC!
August 13:	First Day of School!



Attendance

- **8 Day Letters**
- **Tardy Policy**



Behavior



Cell Phones are not allowed to be used at Newton



We're looking
forward to meeting
our future Knights!



Discover Newton...