

GIFTED AND TALENTED AT GODDARD

Please sign in and help yourself to any brochures.



HELLO!

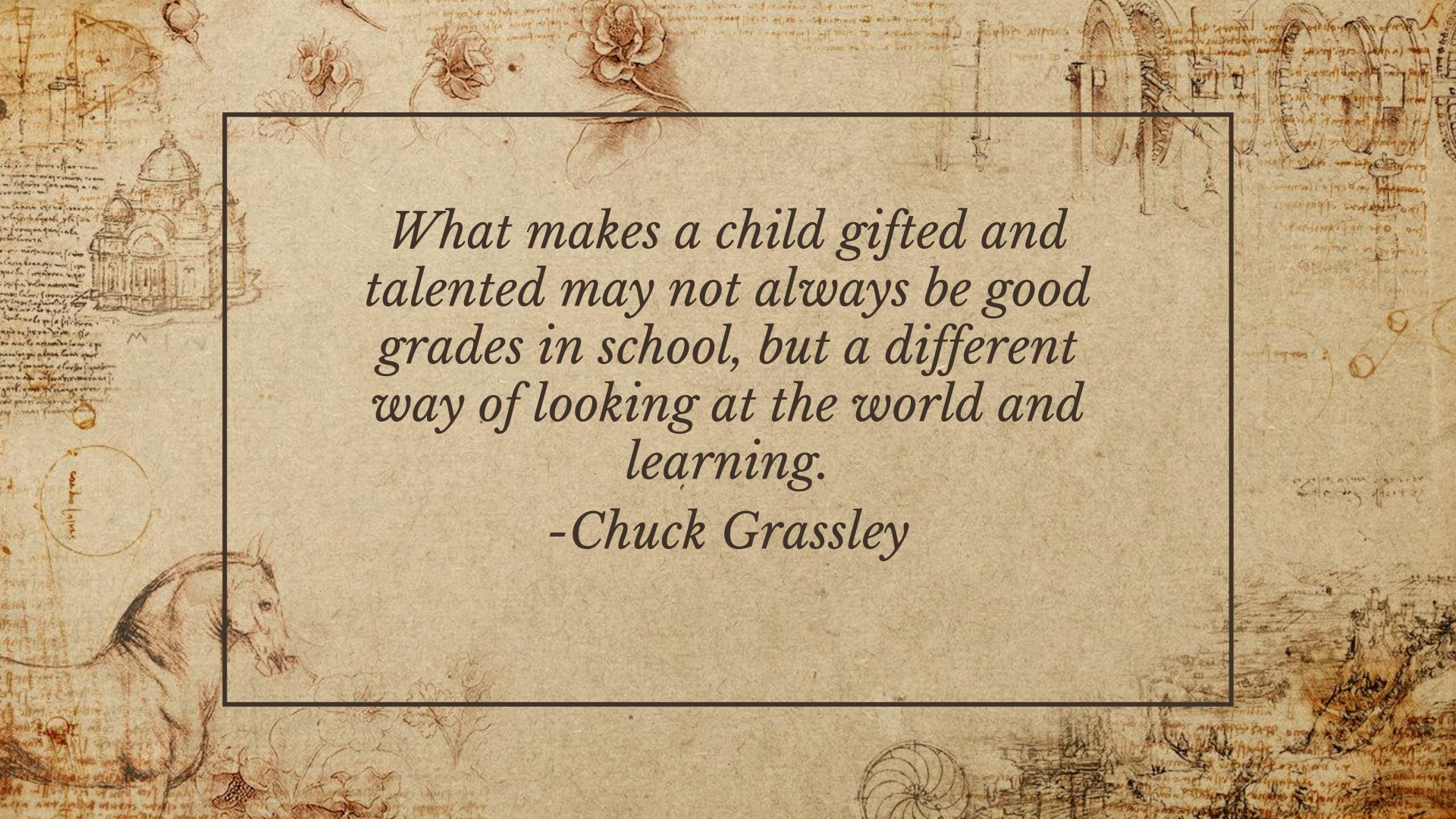
I am Jean Kavanagh

I am here to introduce you to GT at Goddard.

You can find me at jkavanagh@lps.k12.co.us



1.
WHAT IS GT?



What makes a child gifted and talented may not always be good grades in school, but a different way of looking at the world and learning.

-Chuck Grassley

GIFTED INDIVIDUALS ARE THOSE WHO...

❖ demonstrate exceptional ability to reason and learn

or

❖ show outstanding competence (10% or rarer) in documented performance or achievement

in one or more domains (e.g., mathematics, music, language)
and/or set of sensorimotor skills (e.g., painting, dance, sports).

- National Association for Gifted Children

POSSIBLE CHARACTERISTICS OF GIFTEDNESS

- ❖ Reasons well
- ❖ Learns rapidly
- ❖ Has extensive vocabulary
- ❖ Has an excellent memory
- ❖ Has a long attention span (if interested)
- ❖ Sensitive
- ❖ Shows compassion
- ❖ Perfectionistic
- ❖ Intense
- ❖ Has strong curiosity
- ❖ Perseverant in their interests
- ❖ Has high degree of energy
- ❖ Prefers older companions or adults
- ❖ Has a wide range of interests
- ❖ Has a great sense of humor
- ❖ Early or avid reader
- ❖ Concerned with justice, fairness
- ❖ Judgment mature for age at times
- ❖ Is a keen observer
- ❖ Has a vivid imagination
- ❖ Is highly creative
- ❖ Might question authority
- ❖ Has facility with numbers
- ❖ Morally sensitive

A large, rustic wooden water wheel is the central focus, partially submerged in a stream. The wheel is made of thick, weathered wooden beams and is set within a stone mill structure. The background shows a stone wall with some faint markings, including the number '832'. The scene is brightly lit, suggesting a sunny day.

I can grow up to do so many
great things.

Give me a chance now to
learn how to use my gift
before I lose it forever.

Photo and quote by
Angie French
2011

2. GT IN LPS



THIS AND THAT

- ❖ 13% of LPS students are identified Gifted and Talented.
- ❖ 20% of those students are optionally enrolled from other districts
- ❖ GT Advisory Committee - Parents, teachers, and others discussing GT in LPS
- ❖ GT information can be found on the district website
- ❖ Click the *Parents* tab – scroll down to *Programs* and then click on *Gifted and Talented*

www.littletonpublicschools.com

3.

GT AT GMS





93

Total Students Identified GT



29

6th Graders

25

7th Graders

39

8th Graders

The background is a textured, aged parchment or paper with a light beige tone. It features faint, handwritten text in a cursive script, likely from a historical manuscript. There are several diagrams and sketches scattered across the page, including a complex geometric diagram in the top left corner, a circular diagram with internal lines in the middle left, and a circular diagram with a shaded segment in the bottom right. The overall appearance is that of an old, scholarly document.

43

Teachers provide GT
services to your children in
some shape or form!

PROGRAMMING OPTIONS

- ❖ Honors Math
- ❖ Honors Language Arts
- ❖ Algebra
- ❖ Honors Science by Contract, 7th & 8th Grade
- ❖ Honors Spanish, 8th Grade
- ❖ STEM
- ❖ Orchestra
- ❖ Curricula Differentiation
- ❖ Services for at-risk and underachieving students
- ❖ 6th Grade GT Seminar (2nd quarter or 3rd quarter)
- ❖ 7th Grade GT ELO (1st Semester)
- ❖ 8th Grade GT ELO (3rd or 4th quarter)

CLUBS OFFERED

- ❖ Brain Bowl
- ❖ Chess Club
- ❖ Community Service (Student Council, Gardening Club, and W.E.B.)
- ❖ Geography Bee
- ❖ Jazz Band
- ❖ Math Counts
- ❖ Talent Show
- ❖ Yearbook Club
- ❖ NJHS (8th grade only, for those who qualify)
- ❖ Technology Student Association (TSA)
- ❖ School Play/Musical
- ❖ Various Sports

THE FOUR CS IN MY GT SEMINAR CLASS

Creativity



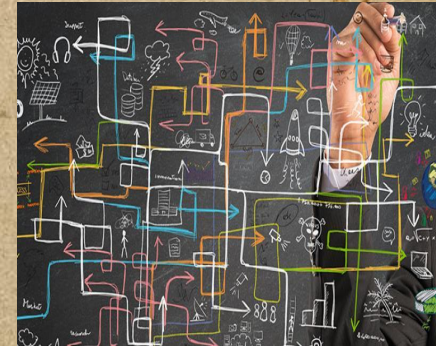
Challenge



Choice



Complexity



GT SEMINAR - EXAMPLE SYLLABUS

6th Grade

“Intro to the Four C’s of GT”

- ❖ Mock Trials (complexity)
- ❖ Stop Motion Animation (creativity)
- ❖ Slowest Maze (challenge)
- ❖ Choice between other smaller activities.

7th Grade

“Who Am I?”

- ❖ Ignite (choice and complexity)
- ❖ Widest Span Bridge (challenge)
- ❖ Magazine Creation (creativity)

8th Grade

“10,000 Hours”

- ❖ Students will choose something they don’t know how to do and learn to get better at it (creativity, challenge, and complexity)

4. THE ALP



ADVANCED LEARNING PLANS (ALP)

1. *Use MAP and CMAS data, last year's ALP and student input to develop this year's ALP.*

3. *Review and assess progress on ALP.*

2. *Monitor and discuss ALP with students during year.*

WHAT IS ON THE ALP

- ❖ Outline of services provided.
- ❖ Academic growth goal in strength area.
- ❖ Affective goal in self-advocacy and increased school success.



5.

WE COULD USE YOU

WANT TO GET MORE INVOLVED?

- ❖ We need a Destination Imagination sponsor. Talk to me if you might be interested.
- ❖ Check out the district's GT Facebook page: LPS Gifted & Talented Advisory Council - GTAC for a lot of videos, articles, and resources.
- ❖ Check out one of the books from our GT library.

WHAT DO WE NEED TO KNOW?

- ❖ Please use the index cards to let us know anything about your child and what they need.
- ❖ Please include your name, your child's name, and grade.

Some where,
something incredible
is waiting
to be known.

Carl Sagan

www.inspired.com

The background is a textured, aged parchment or paper surface. It features faint, handwritten text in a historical script, likely Latin or Greek, which is mostly illegible due to fading. Several geometric diagrams are scattered across the page, including a complex polygonal shape in the upper left, a circle with internal lines in the lower left, and a circular diagram with a shaded segment in the lower right. The overall aesthetic is that of an antique manuscript or a historical scientific document.

THANK YOU.

Any questions?

You can find me at jkavanagh@lps.k12.co.us