

Littleton Public Schools

Demographics Enrollment

Building Capacity and Utilization

Board of Education

August 23, 2007

Purpose

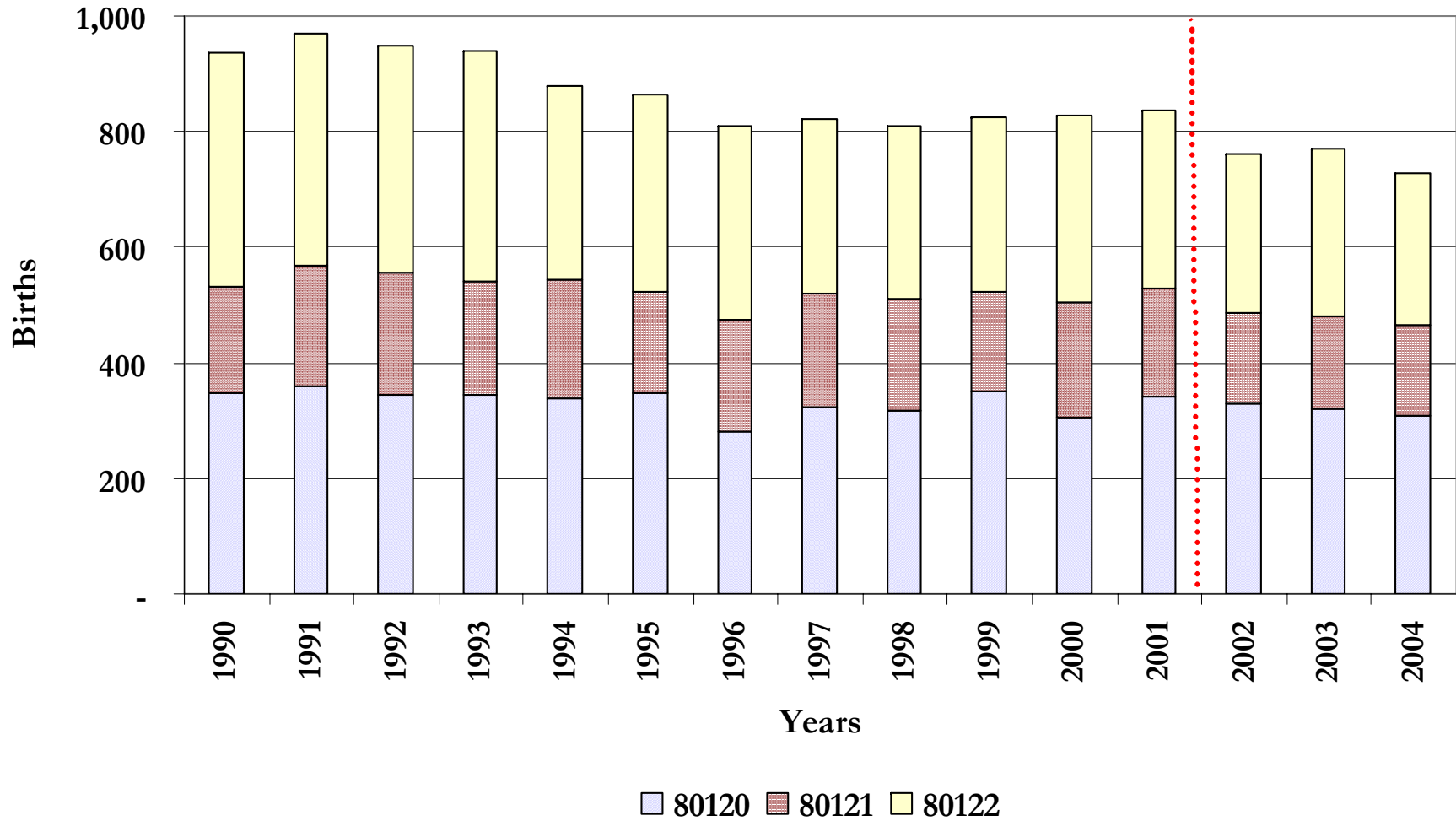
- **Review Demographic Study results**
- **Review enrollment**
 - **History**
 - **Makeup**
 - **Trends and forecast**
- **Review building capacity and utilization**

Demographic Study – May 2006

Declining enrollment factors:

- Number of births trending lower
- Age of resident population trending higher
- Housing characteristics

**Figure I-6. Births in Littleton Public Schools Core ZIP Codes:
80120, 80121 & 80122**



Child Bearing Age Influence

Median Age by Gender	ZIP Code Area		
	80120	80121	80122
Male	37.7	40.6	38.9
Female	41.1	42.3	41.2
Both	39.6	41.4	40.2

Source: U.S. Census Bureau, Census 2000, Summary File 3.

Housing Characteristics

- Home affordability ranking equal to metro Denver average
- Home prices (cost per square foot) are competitive within region as a whole
- Most homes are older, have less square footage with fewer amenities
- Turnover is relatively low
- New home builders offer amenities, incentives and financing targeted toward young families

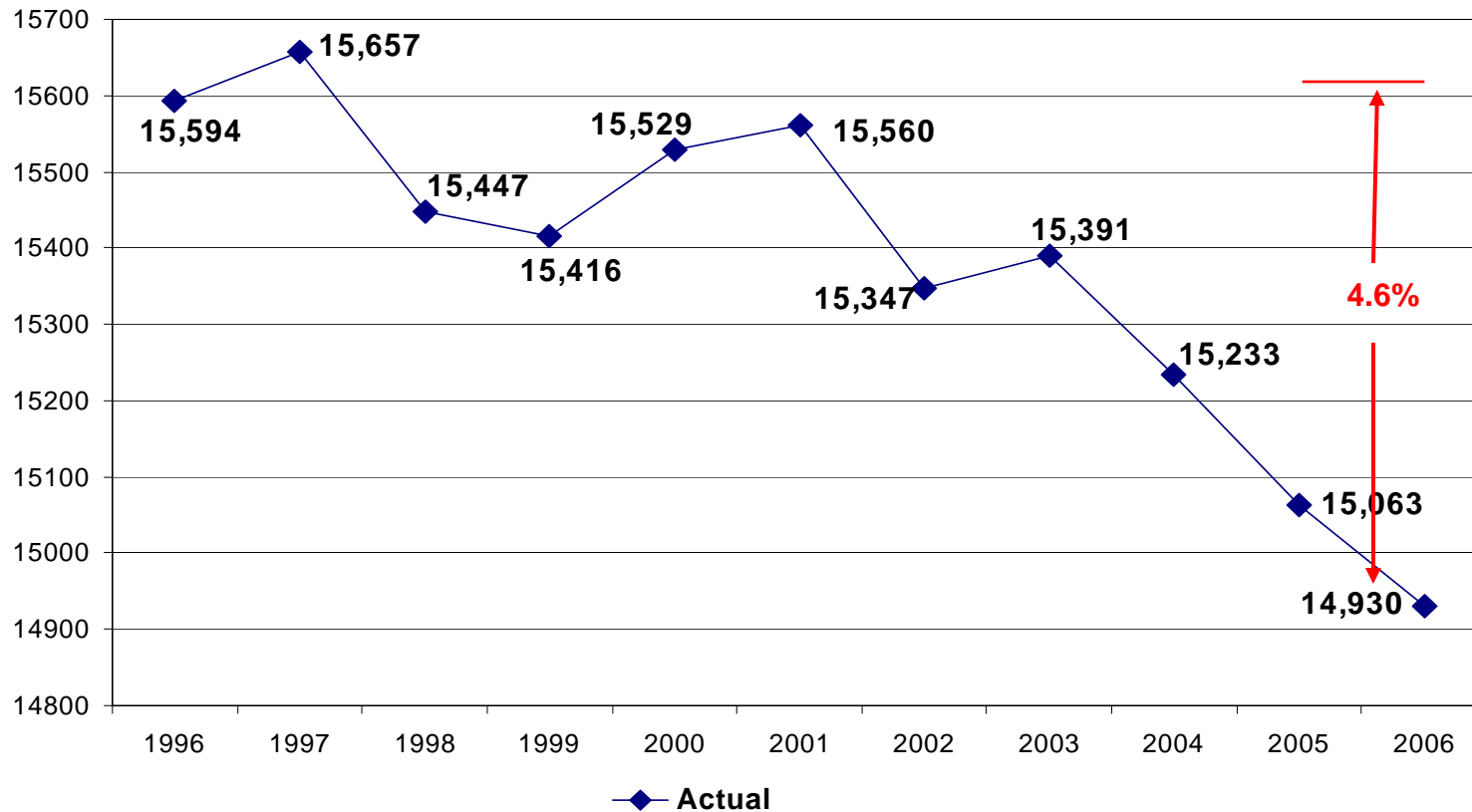
Key Demographic Study Observations

- Elementary enrollment has continued to decline
 - Out-of-district enrollment is increasing in importance
 - Kindergarten, and subsequent grades, decline is primarily attributable to decreasing births
 - Secondary enrollment, especially high schools, has stabilized total enrollment
 - Relatively high median age is consistent with stable population characteristics, hence declining school age children population
 - Housing turnover is low
-

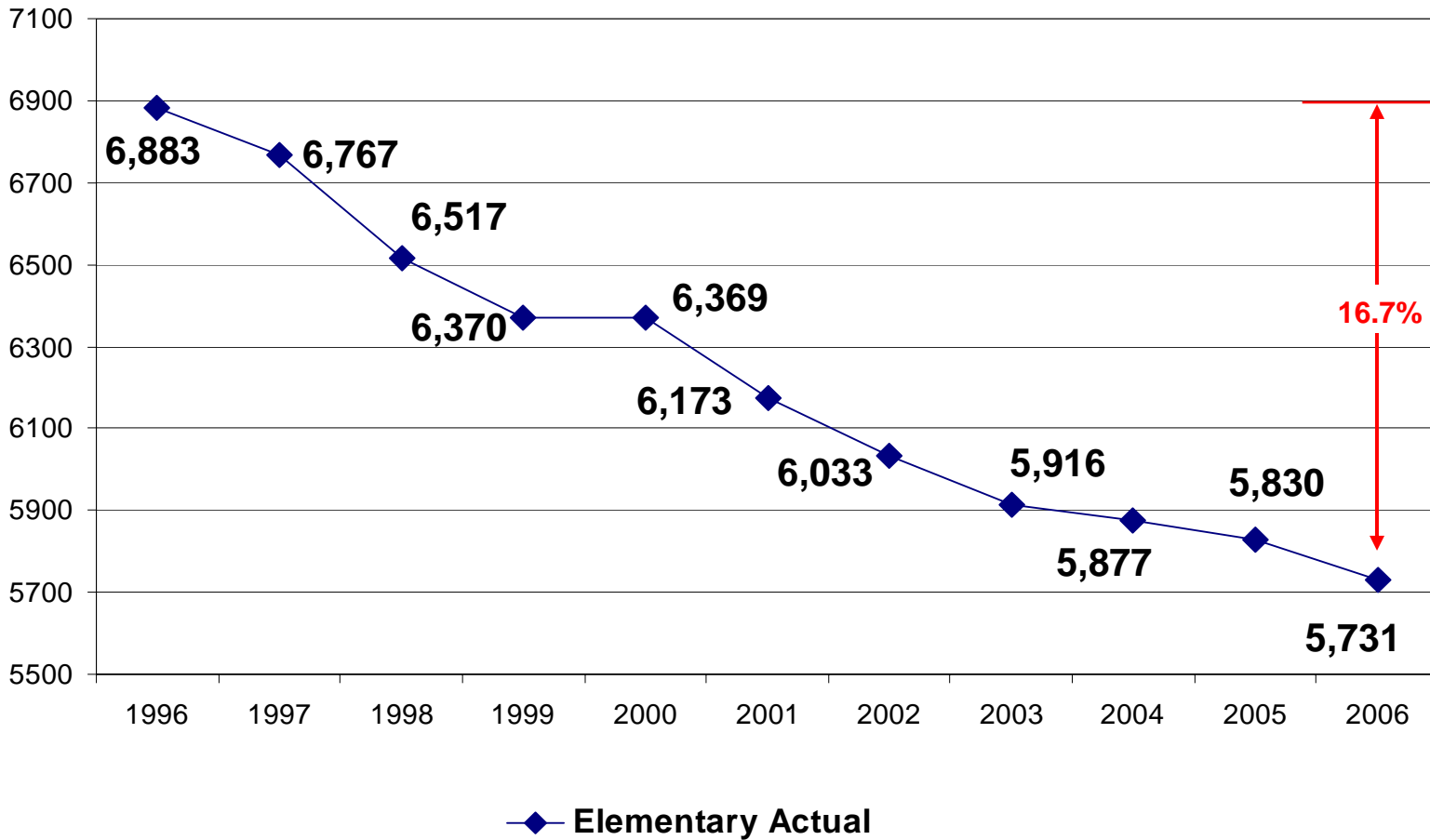
Enrollment

- **History**
- **Makeup**
- **Trends and forecast**

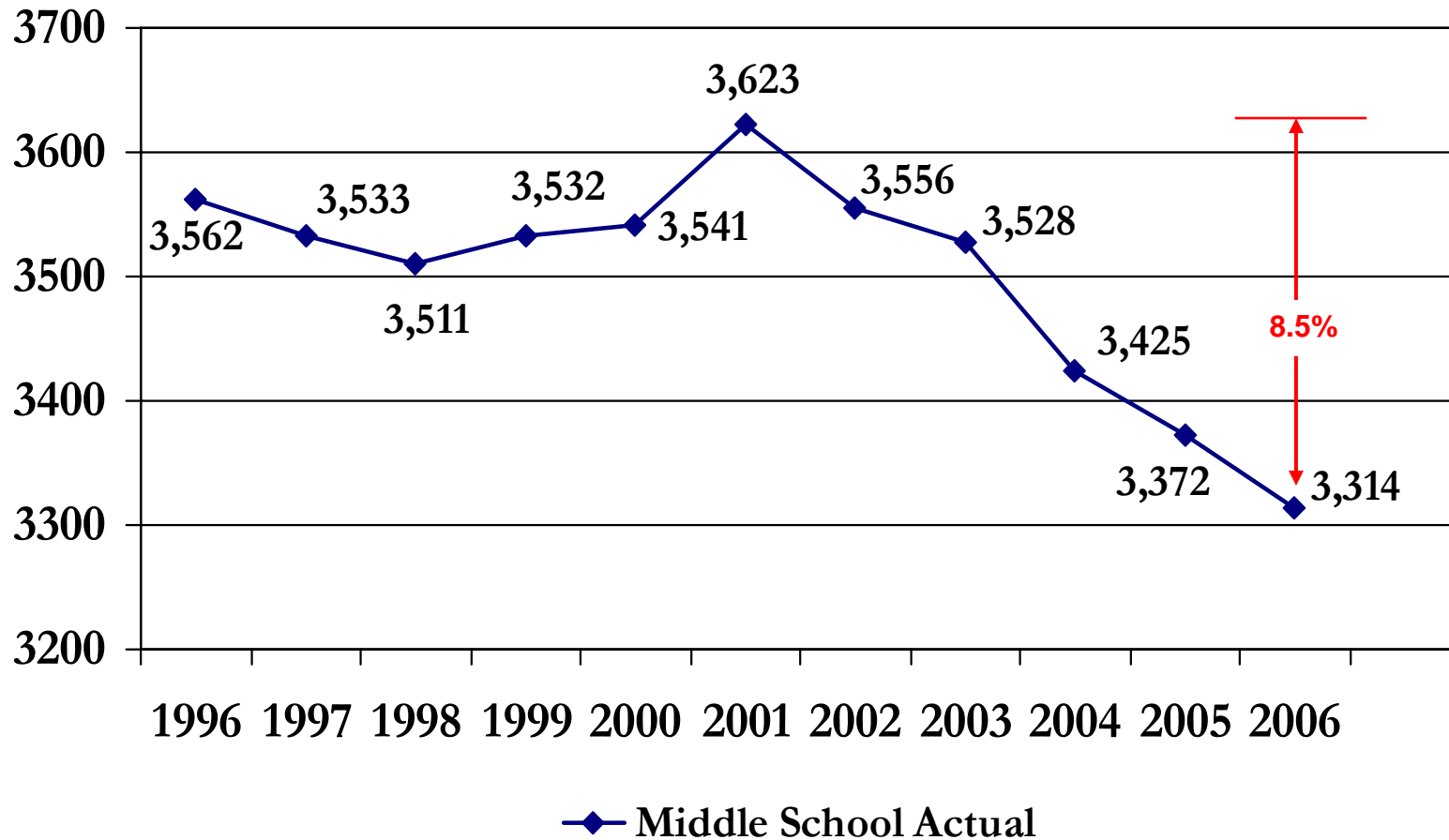
LPS Enrollment History (excluding Charter Schools)



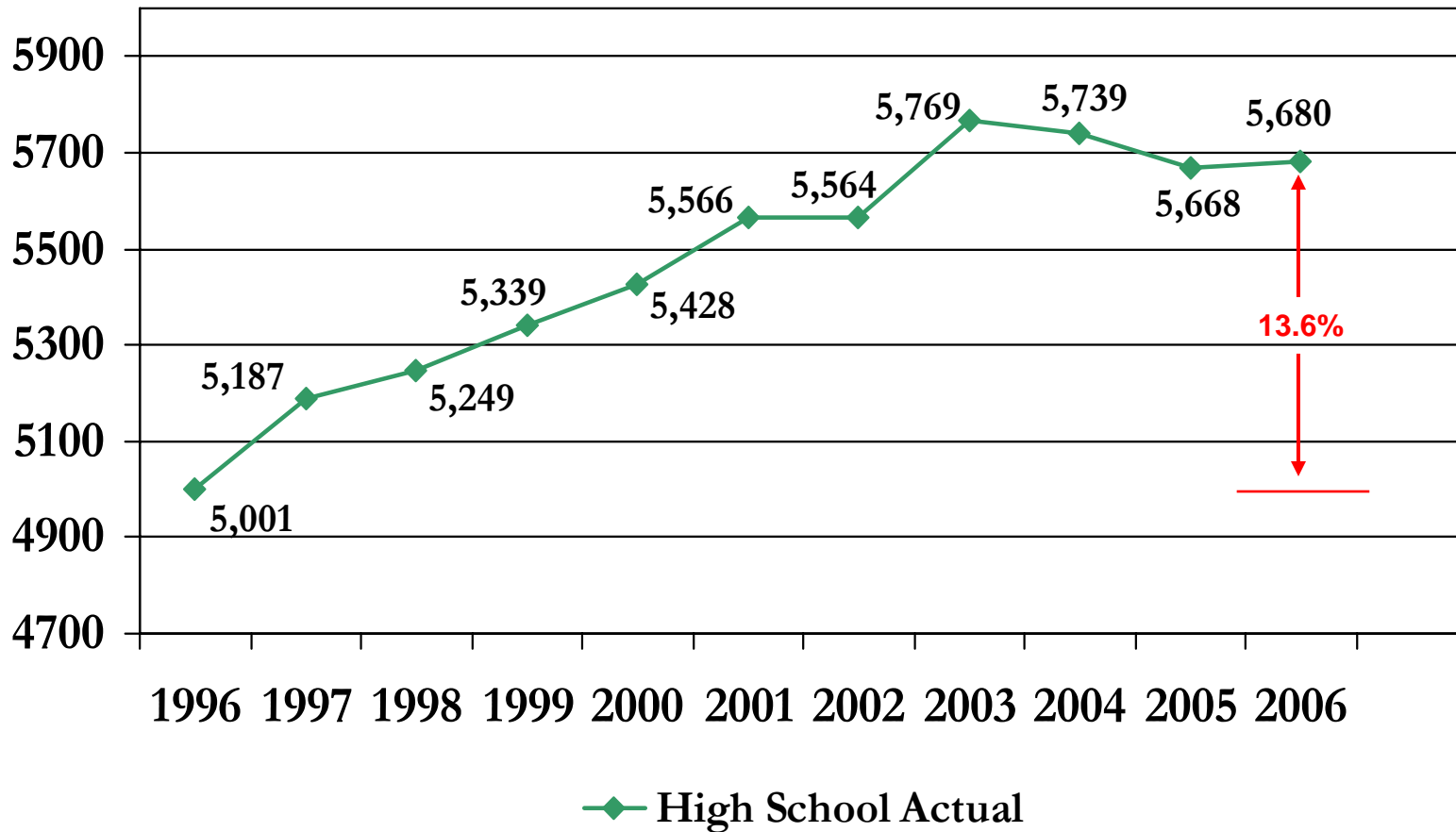
Elementary Enrollment History (excluding Charter Schools and The Village)



Middle School Enrollment History (excluding Charter Schools)



High School Enrollment History (excluding Charter Schools)



Enrollment Makeup (excluding Charter Schools)

■ Total 2006 enrollment	14,930
■ In-district enrollment	12,996 (87%)
■ Out-of-district enrollment	1,934 (13%)
□ Preschool	21
□ Elementary	736
□ Middle School	311
□ High School	866

Optional Enrollment within the District as of 12/07/2006 with Special Programs (SCIL, PACE, TAB, ESL)

Attendance School

		Ames	Centennial	East	Field	Franklin	Highland	Hopkins	Lenski	Moody	Peabody	Runyon	Sandburg	Twain	Whitman	Wilder	Total
Home School	Ames			6		7	5	8	85	1	21	5	7	3	1		149
	Centennial			32	10	2	1	5		18	2	2		1	7	14	94
	East		6		11	17	8	2	2	13	6	5	1	2	12		85
	Field	3	12	41		5	5	3	21	17	7	2	4	1	8	5	134
	Franklin			11					1	4		1	1	2			20
	Highland	7		25	1	20		6	11	6	8	1	24	4	5		118
	Hopkins	1		2	1	6	7		4		1	7	4	30	4		67
	Lenski			1		7		4		1	6		2	1	1		23
	Moody	1	8	11	5	7	2	4	2				41	1	10	5	97
	Peabody	2	2	10	2	4	1	3	22	2			11	3	1		63
	Runyon	4	3	7	3	5	5	21	1	5	3		8	3	3	1	72
	Sandburg	3			2	12	3	5	13		7			6	3		54
	Twain	4		7	2	8	8	20	2	1	1	7	4				64
	Whitman		4	10	5	5	1	10	2	12	1	19	2	9		13	93
	Wilder		10		2				2	1	1	7		2			25
	Total	25	45	163	44	105	46	94	170	77	64	96	69	67	55	38	1158
	Ames	Centennial	East	Field	Franklin	Highland	Hopkins	Lenski	Moody	Peabody	Runyon	Sandburg	Twain	Whitman	Wilder		
Optional	-124	-49	78	-90	85	-72	27	147	-20	1	24	15	3	-38	13		
Out of District	22	121	28	45	51	22	53	69	47	25	29	52	39	35	98		
Total	-102	72	106	-45	136	-50	80	216	27	26	53	67	42	-3	111		

Optional Enrollment within the District excluding Special Programs (SCIL, PACE, TAB, ESL) as of 12/07/2006

Attendance School

		Ames	Centennial	East	Field	Franklin	Highland	Hopkins	Lenski	Moody	Peabody	Runyon	Sandburg	Twain	Whitman	Wilder	Total	
Home School	Ames			0		5	3	7	83	1	15	1	7	3	0		125	
	Centennial			3	5	1	1	3		12	2	1		1	4	14	47	
	East		4		9	17	7	2	2	12	6	5	1	2	12		79	
	Field	1	8	10		4	5	2	20	14	5	1	4	1	4	5	84	
	Franklin			0				0	4		1		0	2			7	
	Highland	4		8	1	18		6	10	5	6	1	24	4	5		92	
	Hopkins	0		0	1	5	5		4		1	4	4	28	2		54	
	Lenski			0		6		4		1	2		2	1	1		17	
	Moody	0	7	3	5	7	0	4	2				34	1		10	4	77
	Peabody	2	2	5	2	2	1	3	20	0			11	2	1		51	
	Runyon	3	3	1	3	5	5	19	1	5	3		8	3	3	1	63	
	Sandburg	1			2	7	3	4	13		4			4	3		41	
	Twain	1		0	1	7	8	15	2	1	1	5	4				45	
	Whitman		4	3	5	5	1	9	2	9	1	15	2	9		13	78	
	Wilder		7		2			1	1	1		5		1			18	
	Total	12	35	33	36	89	39	79	164	61	47	72	68	61	45	37	878	
		Ames	Centennial	East	Field	Franklin	Highland	Hopkins	Lenski	Moody	Peabody	Runyon	Sandburg	Twain	Whitman	Wilder		
Optional	-113	-12	-46	-48	82	-53	25	147	-16	-4	9	27	16	-33	19			
Out of District	22	121	28	45	51	22	53	69	47	25	29	52	39	35	98			
Total	-91	109	-18	-3	133	-31	78	216	31	21	38	79	55	2	117			

Optional Enrollment within the District as of 12/07/2006 with Special Programs (SCIL, PACE, TAB, ESL)

Attendance School

		Euclid	Goddard	Newton	Powell	Arapahoe	Heritage	Littleton	Total
Home School	Euclid		18	24	52				94
	Goddard	145		7	48				200
	Newton	6	1		17				24
	Powell	27	3	35					65
	Arapahoe						40	66	106
	Heritage					140		128	268
	Littleton					170	170		340
	Total	178	22	66	117	310	210	194	1097
			Euclid	Goddard	Newton	Powell	Arapahoe	Heritage	Littleton
Optional	84	-178	42	52	204	-58	-146		
Out of District	50	134	57	70	243	251	372		
Total	134	-44	99	122	447	193	226		

Optional Enrollment within the District excluding Special Programs (SCIL, PACE, TAB, ESL) as of 12/07/2006

Attendance School

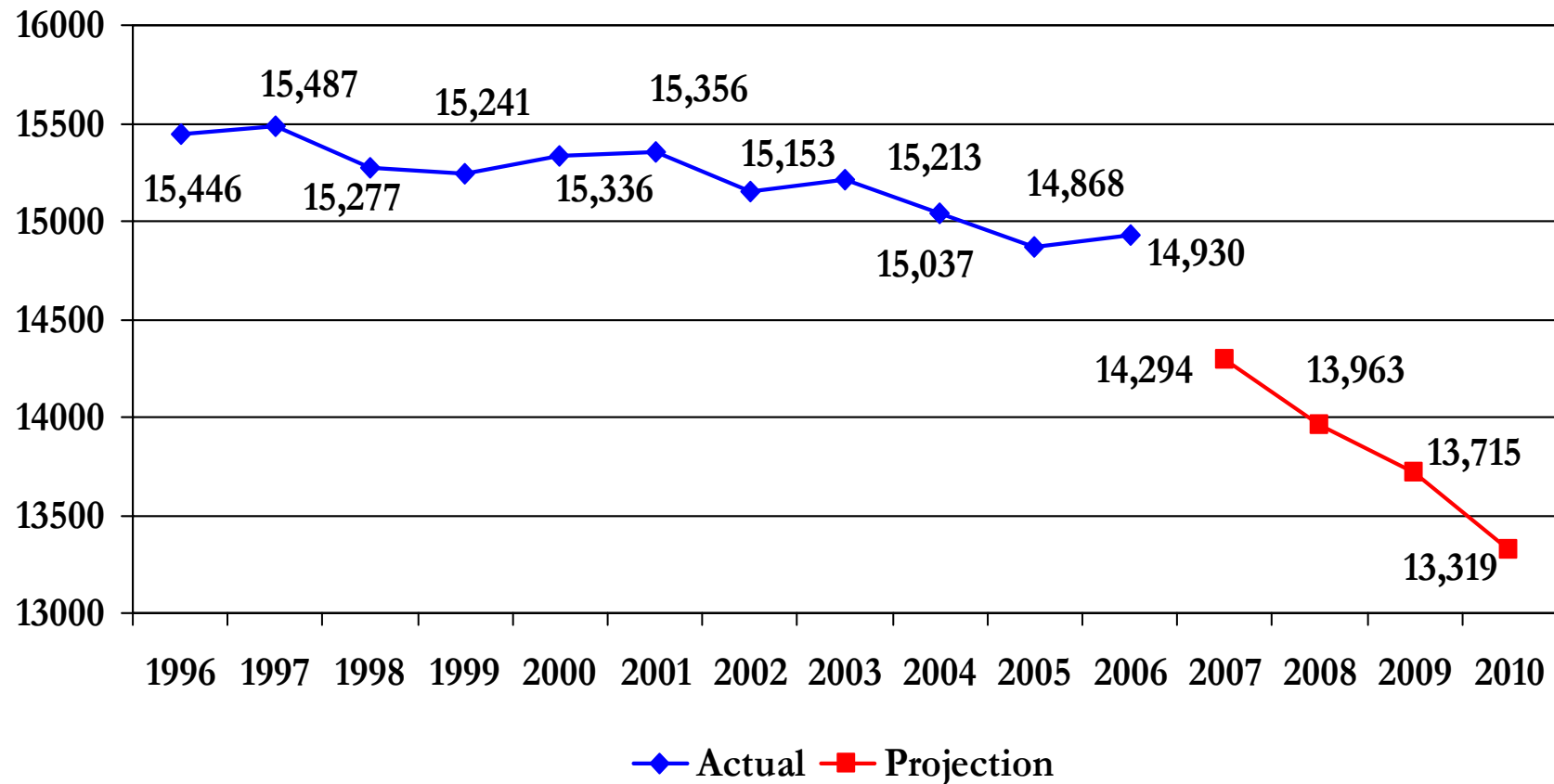
		Euclid	Goddard	Newton	Powell	Arapahoe	Heritage	Littleton	Total
Home School	Euclid		15	11	45				71
	Goddard	130		5	42				177
	Newton	5	0		16				21
	Powell	22	1	21					44
	Arapahoe						34	55	89
	Heritage					130		114	244
	Littleton					156	152		308
	Total	157	16	37	103	286	186	169	954
			Euclid	Goddard	Newton	Powell	Arapahoe	Heritage	Littleton
Optional	86	-161	16	59	197	-58	-139		
Out of District	50	134	57	70	243	251	372		
Total	136	-27	73	129	440	193	233		

Enrollment Forecasts

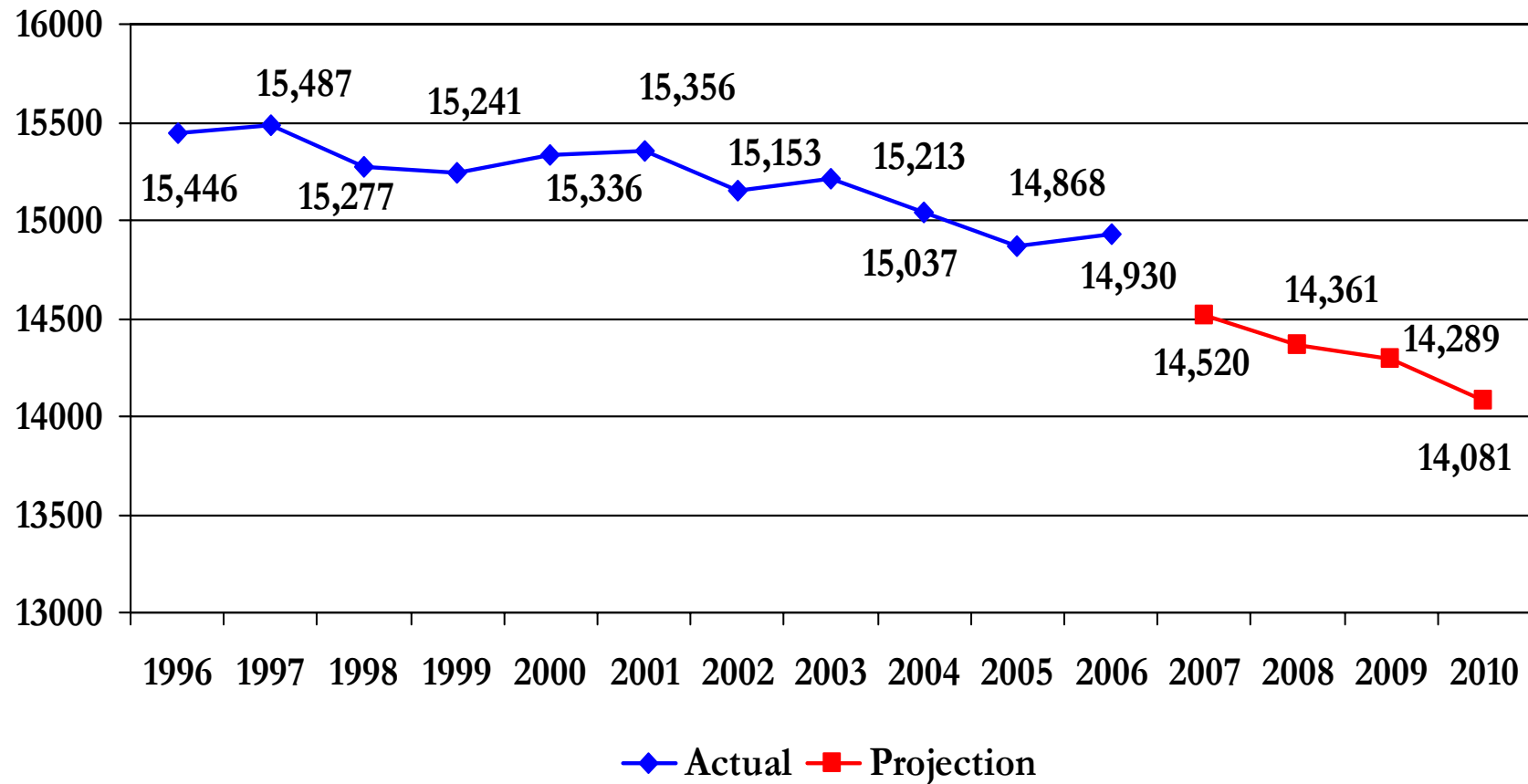
- **Strategic Resources West, Inc.**
 - **Scenario 1**
 - **Percent change average for most recent three years**
 - **Scenario 2**
 - **Percent change average for most recent five years**

 - **LPS model**
 - **3 year weighted average**
-

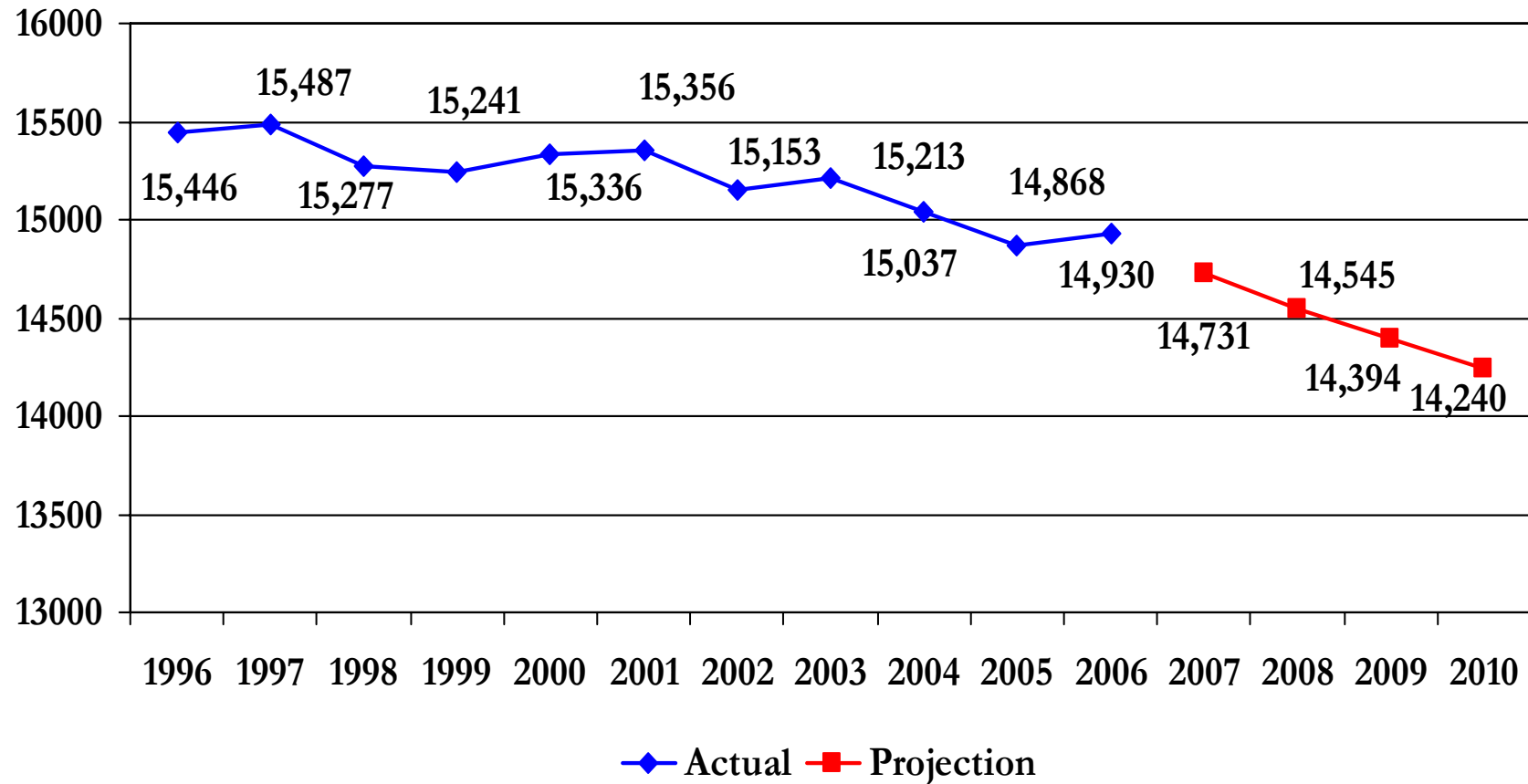
Enrollment Forecast – Scenario 1 (excluding Charter Schools)



Enrollment Forecast – Scenario 2 (excluding Charter Schools)



LPS Enrollment Forecast (excluding Charter Schools)



Building Capacity Calculation

- Excludes specialized spaces - e.g. cafeterias, media center
- Excludes flexible spaces – e.g. district programs, federally mandated programs, fee based programs
- Elementary Schools
 - = (available classrooms) x (24.5)
- Secondary Schools
 - = (available classrooms) x (27)
 - Reduced to account for 90% scheduling efficiency

Capacity and Utilization Summary

Elementary Schools

	2006-2007 Enrollment	Gross Available Capacity	Percentage of Gross Capacity	Less Flexible Programming	Current Available Capacity	Percentage of Building Utilization
Ames	219	515	43%	196	319	69%
Centennial	420	613	69%	147	466	90%
East	303	441	69%	49	392	77%
Field	426	637	67%	172	466	92%
Franklin	411	515	80%	49	466	88%
Highland	351	613	57%	196	417	84%
Hopkins	331	490	68%	123	368	90%
Lenski	606	588	103%	0	588	103%
Moody	304	490	62%	147	343	89%
Peabody	333	539	62%	123	417	80%
Runyon	394	515	77%	49	466	85%
Sandburg	441	564	78%	49	515	86%
Twain	341	466	73%	49	417	82%
Whitman	270	490	55%	123	368	73%
Wilder	581	711	82%	49	662	88%
Subtotal	5731	8183	70%	1519	6664	86%

Capacity and Utilization Summary

Secondary Schools

	2006-2007 Enrollment	Gross Available Capacity	Percentage of Gross Capacity	Less Flexible Programming	Current Available Capacity	Percentage of Building Utilization
Euclid	795	1215	65%	27	1069	74%
Goddard	833	1134	73%	135	899	93%
Newton	748	1161	64%	81	972	77%
Powell	909	1161	78%	27	1021	89%
Subtotal	3285	4671	70%	270	3961	83%
Arapahoe	2187	2322	94%	27	2066	106%
Heritage	1655	2160	77%	54	1895	87%
Littleton	1586	1890	84%	54	1652	96%
Subtotal	5428	6372	85%	135	5613	97%
District Total	14,444	19,226	75%	1,924	16,238	89%

Capacity Calculation Limitations

- **Elementary**
 - ❑ Assumes classroom averages 24.5 children
 - ❑ (Actual 2006 school average is 22. Building capacity is reduced by 25 classrooms X 2.5 = 63 children. Average school class size range in LPS is 18.9 to 25.3)

- **Secondary**
 - ❑ Assumes classroom averages 27 children
 - ❑ Assumes scheduling efficiency of 90 percent

Next Steps

Questions?